



6 Belgrave Terrace, York Road, Salisbury, Wiltshire, SP2 7AP

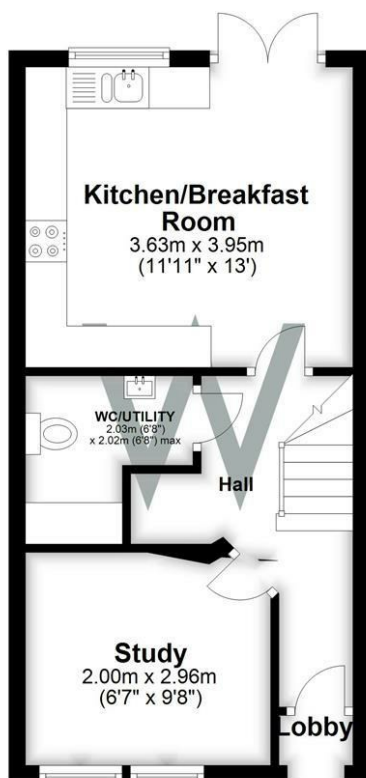
*** VIEWINGS ON HOLD DUE TO HIGH DEMAND ***

A spacious unfurnished, four bedroom, three story town house located within easy walking distance of the city centre with two allocated parking spaces and enclosed garden.

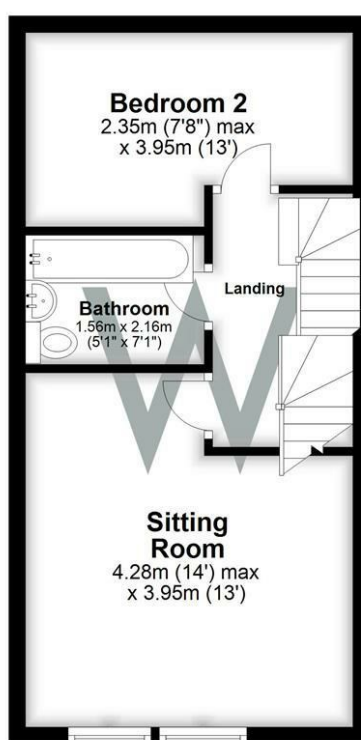
- WALKING DISTANCE TO THE CITY CENTRE AND RAILWAY STATION
- FITTED KITCHEN/DINER WITH DOORS TO GARDEN
- CLOAKROOM/UTILITY ROOM
- STUDY
- FIRST FLOOR SITTING ROOM
- FOUR BEDROOMS
- TWO BATHROOMS
- TWO ALLOCATED PARKING SPACES
- ENCLOSED GARDEN
- GAS FIRED CENTRAL HEATING

£1,500 PCM

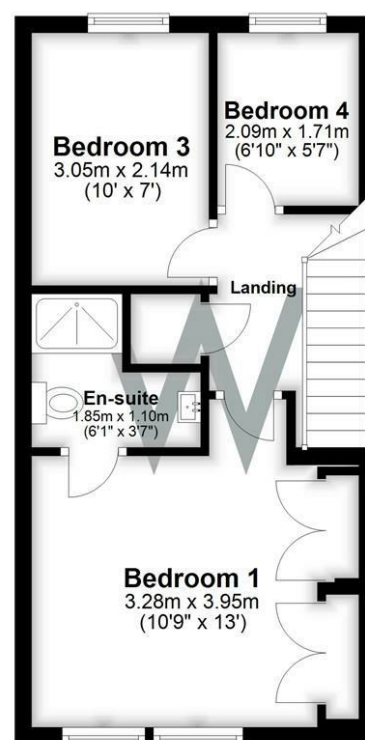
Ground Floor



First Floor



Second Floor



Total area: approx. 99.2 sq. metres (1067.7 sq. feet)
6 Belgrave Terrace


WHITES

Castle Chambers, 47 Castle Street, Salisbury,
Wiltshire, SP1 3SP

Tel: 01722 336422/Option 2

www.hwwhite.co.uk

email: lettings-management@hwwhites.co.uk

Energy Efficiency Rating		Current	Potential
Very energy efficient - lower running costs			
(92 plus) A			92
(81-91) B		81	
(69-80) C			
(55-68) D			
(39-54) E			
(21-38) F			
(1-20) G			
Not energy efficient - higher running costs			
England & Wales		EU Directive 2002/91/EC	

Environmental Impact (CO ₂) Rating		Current	Potential
Very environmentally friendly - lower CO ₂ emissions			
(92 plus) A			96
(81-91) B		86	
(69-80) C			
(55-68) D			
(39-54) E			
(21-38) F			
(1-20) G			
Not environmentally friendly - higher CO ₂ emissions			
England & Wales		EU Directive 2002/91/EC	